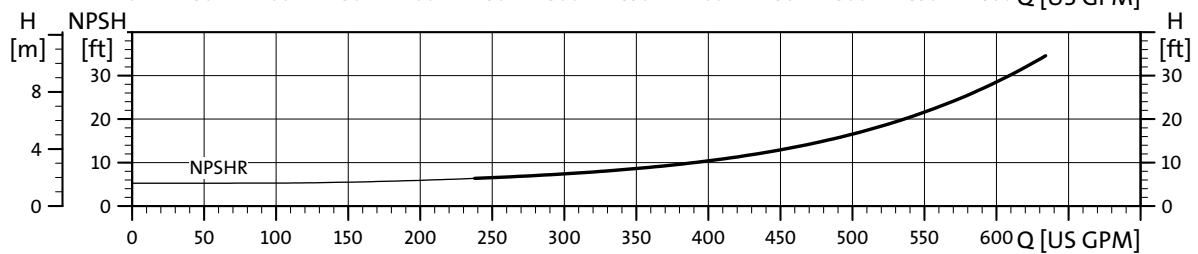
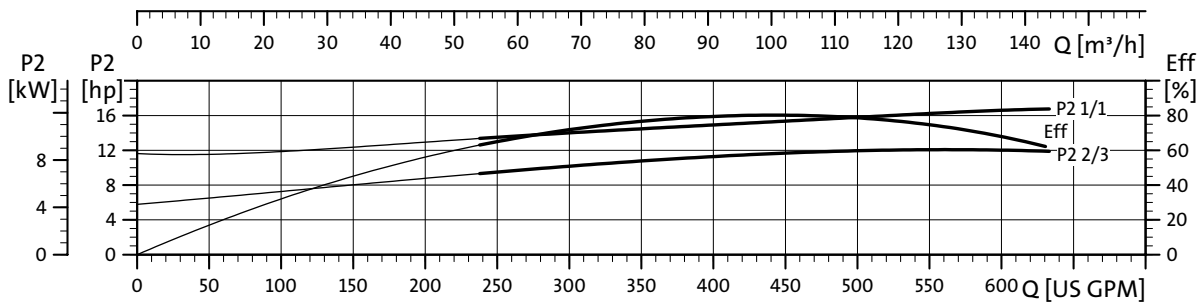
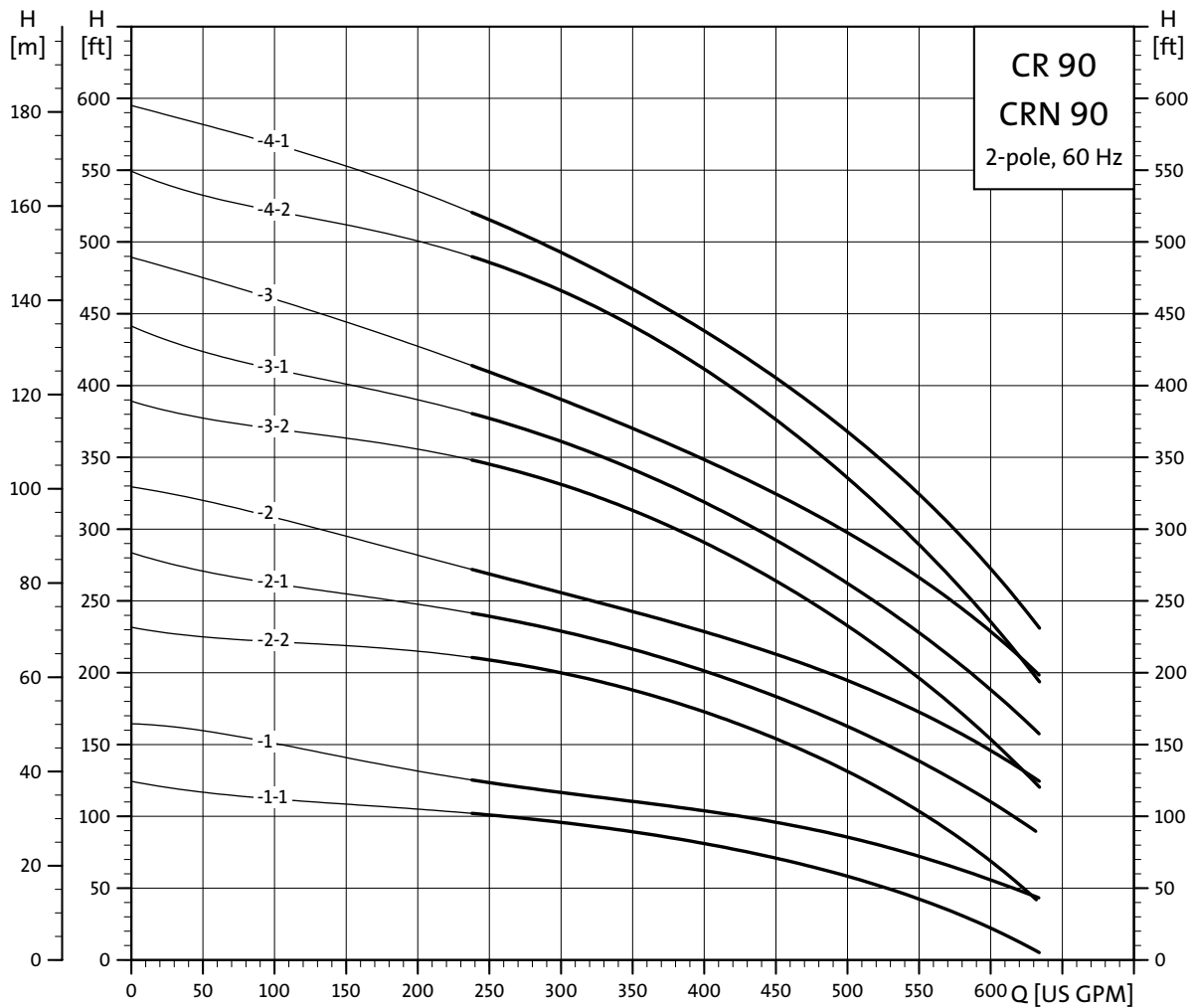


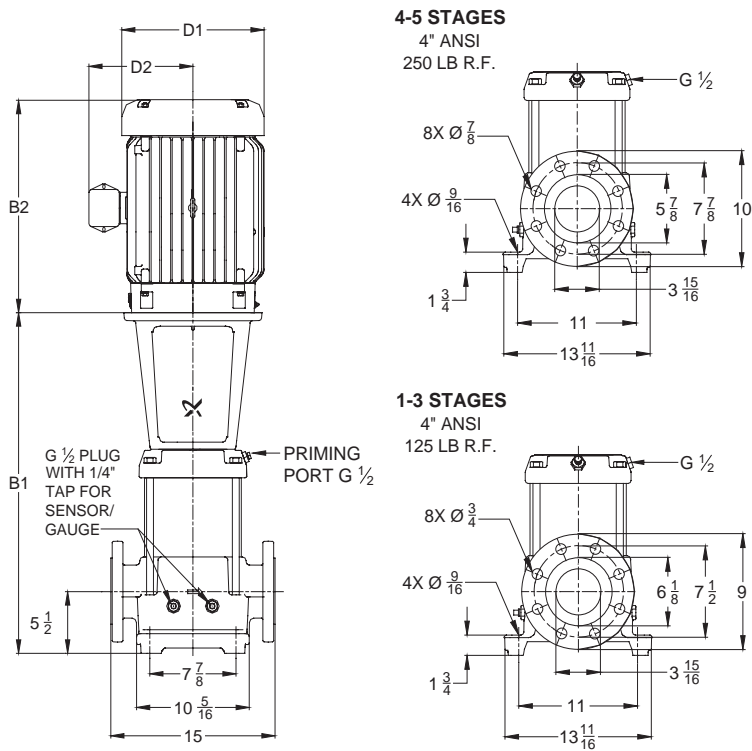
# Performance curves

CR, CRN 90



TM02.0042.1303

## Dimensional sketches



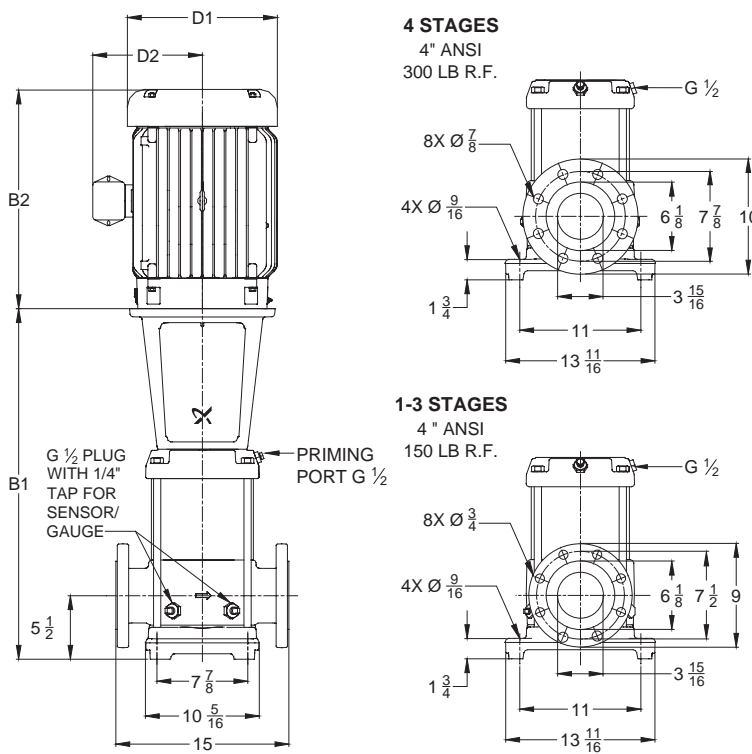
TM027702 3804

## Dimensions and weights

Pump type	Hp	Ph	Voltage	NEMA Frame size	ANSI B1	TEFC			ODP			ANSI Ship Wt. <sup>1</sup> [lbs.]
						D1	D2	ANSI B1+B2	D1	D2	ANSI B1+B2	
CR 90-1-1	15	3	208-230/460	254TC	26 7/8	10 3/8	8 3/4	43 1/2	10 5/8	7 3/8	43	351
CR 90-1	15	3	208-230/460	254TC	26 7/8	10 3/8	8 3/4	43 1/2	10 5/8	7 3/8	43	351
CR 90-2-2	25	3	230/460	284TSC	30 1/2	13	9 1/2	50 1/4	11 1/2	9	51 1/2	527
CR 90-2-1	30	3	230/460	284TSC	30 1/2	15 3/8	13 1/8	53 1/2	11 1/2	9	52 1/8	573
CR 90-2	40	3	230/460	286TSC	30 1/2	15 3/8	13 1/8	53 1/2	13 1/4	12 1/4	53 1/2	650
CR 90-3-2	40	3	230/460	286TSC	34 1/8	15 3/8	13 1/8	57 1/8	13 1/4	12 1/4	57 1/8	660
CR 90-3-1	50	3	230/460	324TSC	34 1/8	17	14 1/8	61 3/4	13 3/8	12 1/4	56 5/8	724
CR 90-3	50	3	230/460	324TSC	34 1/8	17	14 1/8	61 3/4	13 3/8	12 1/4	56 5/8	752
CR 90-4-2	60	3	230/460	364TSC	37 3/4	19	15	68 3/8	15 1/4	13 1/4	63 3/4	870
CR 90-4-1	60	3	230/460	364TSC	37 3/4	19	15	68 3/8	15 1/4	13 1/4	63 3/4	870

Weights based on pump with TEFC motor (see price list for individual weights)  
All dimensions in inches unless otherwise noted.

## Dimensional sketches



TM027706 3804

## Dimensions and weights

Pump type	Hp	Ph	Voltage	NEMA Frame size	ANSI B1	TEFC			ODP			ANSI Ship Wt. <sup>1</sup> [lbs.]
						D1	D2	ANSI B1+B2	D1	D2	ANSI B1+B2	
CRN 90-1-1	15	3	208-230/460	254TC	26 7/8	10 3/8	8 3/4	43 1/2	10 5/8	7 3/8	43	351
CRN 90-1	15	3	208-230/460	254TC	26 7/8	10 3/8	8 3/4	43 1/2	10 5/8	7 3/8	43	351
CRN 90-2-2	25	3	230/460	284TSC	30 1/2	13	9 1/2	50 1/4	11 1/2	9	51 1/2	527
CRN 90-2-1	30	3	230/460	284TSC	30 1/2	15 3/8	13 1/8	53 1/2	11 1/2	9	52 1/8	573
CRN 90-2	40	3	230/460	286TSC	30 1/2	15 3/8	13 1/8	53 1/2	13 1/4	12 1/4	53 1/2	650
CRN 90-3-2	40	3	230/460	286TSC	34 1/8	15 3/8	13 1/8	57 1/8	13 1/4	12 1/4	57 1/8	660
CRN 90-3-1	50	3	230/460	324TSC	34 1/8	17	14 1/8	61 3/4	13 3/8	12 1/4	56 5/8	724
CRN 90-3	50	3	230/460	324TSC	34 1/8	17	14 1/8	61 3/4	13 3/8	12 1/4	56 5/8	752
CRN 90-4-2	60	3	230/460	364TSC	37 3/4	19	15	68 3/8	15 1/4	13 1/4	63 3/4	870
CRN 90-4-1	60	3	230/460	364TSC	37 3/4	19	15	68 3/8	15 1/4	13 1/4	63 3/4	870

Weights based on pump with TEFC motor (see price list for individual weights)  
All dimensions in inches unless otherwise noted.