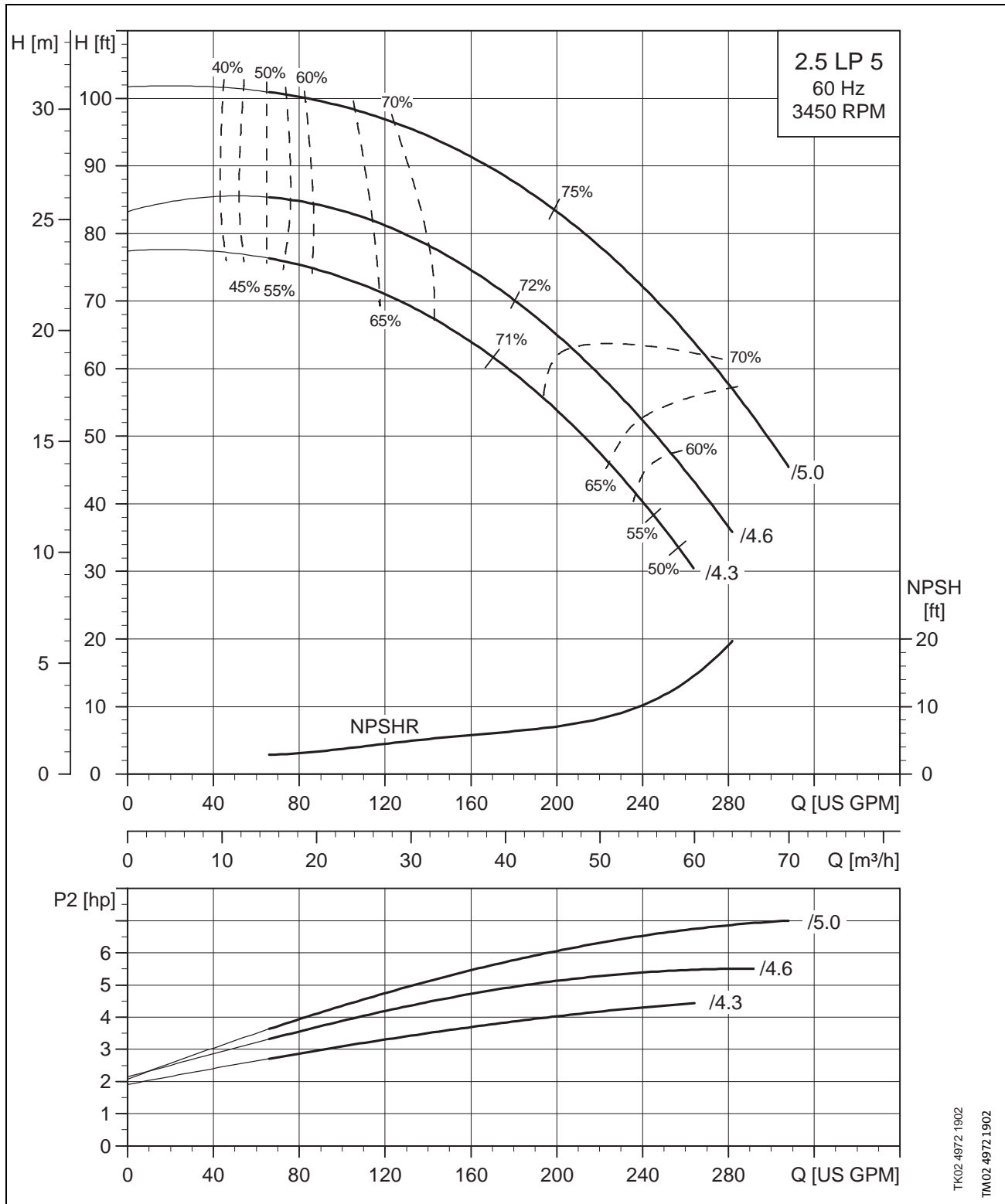
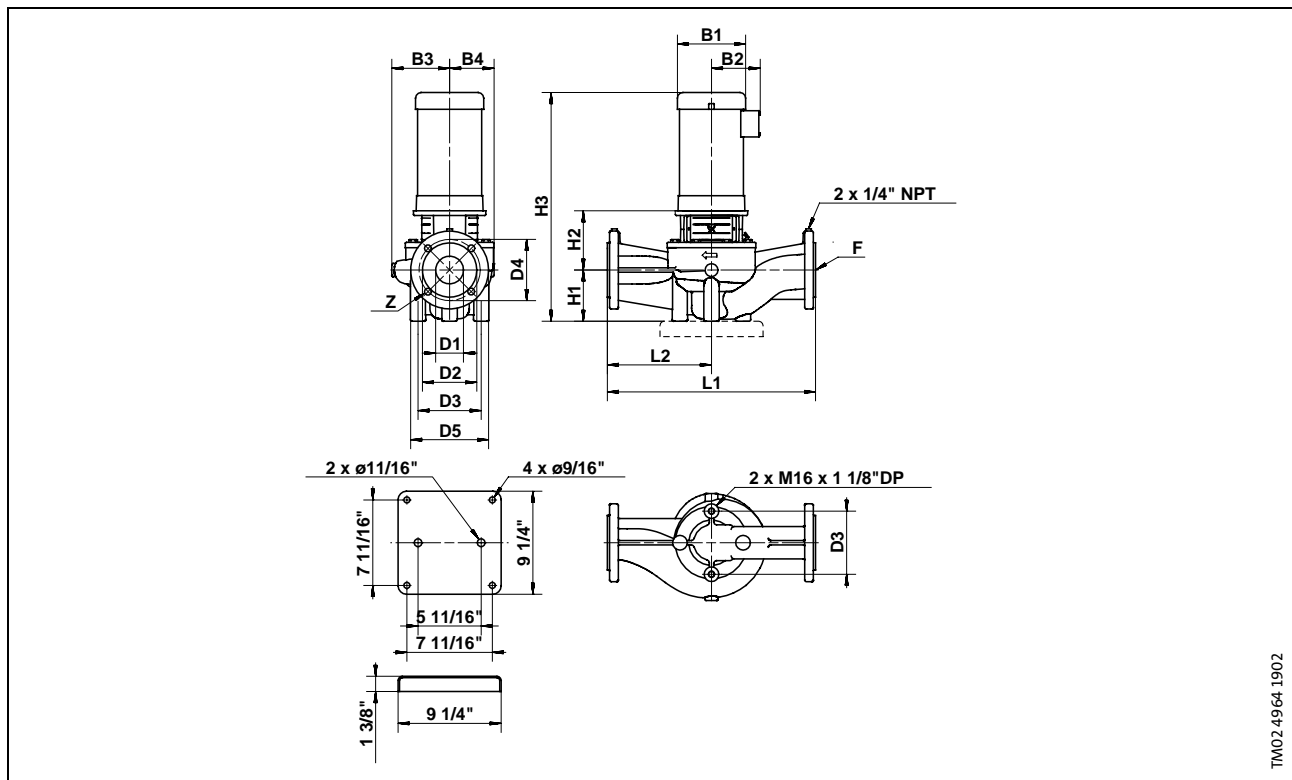


### 2.5 LP 5/XX



### 2.5 LP 5/XX



TM02 4964 1902

### Electrical Data, Dimensions and Weights

Pump Type	HP	Mtr S.F.	PH	NEMA Frame Size	Volts	Dimensions [Inches] (mm)				Z [Qty.]	Dimensions [inches] (mm)								Net Wt.	
						D1	D3	D4	D5		B1	B2	B3	B4	H1	H2	H3	L1		L2
2.5 LP 5/4.3	5.0	1.15	1	213TC	208-230	2 1/2 (64)	5 11/16 (145)	5 1/4 (140)	7 (178)	4 x 5/8 4x(16)	10 1/4	7 3/8	5 1/8 (130)	4 3/8 (111)	4 9/16 (116)	6 (152)	26 11/16	19 (483)	9 1/2 (241)	188
	5.0	1.15	3	184TC	208-230/460,575	2 1/2 (64)	5 11/16 (145)	5 1/4 (140)	7 (178)	4 x 5/8 4x(16)	8 1/2	5 7/8	5 1/8 (130)	4 3/8 (111)	4 9/16 (116)	6 (152)	24 1/2	19 (483)	9 1/2 (241)	159
2.5 LP 5/4.6	5.0	1.15	1	213TC	208-230	2 1/2 (64)	5 11/16 (145)	5 1/4 (140)	7 (178)	4 x 5/8 4x(16)	10 1/4	7 3/8	5 1/8 (130)	4 3/8 (111)	4 9/16 (116)	6 (152)	26 11/16	19 (483)	9 1/2 (241)	188
	5.0	1.15	3	184TC	208-230/460,575	2 1/2 (64)	5 11/16 (145)	5 1/4 (140)	7 (178)	4 x 5/8 4x(16)	8 1/2	5 7/8	5 1/8 (130)	4 3/8 (111)	4 9/16 (116)	6 (152)	24 1/2	19 (483)	9 1/2 (241)	159
2.5 LP 5/5.0	7.5	1.15	1	213TC	208-230	2 1/2 (64)	5 11/16 (145)	5 1/4 (140)	7 (178)	4 x 5/8 4x(16)	10 1/4	7 3/8	5 1/8 (130)	4 3/8 (111)	4 9/16 (116)	7 15/16 (202)	28 1/8	19 (483)	9 1/2 (241)	202
	7.5	1.15	3	215TC	208-230/460,575	2 1/2 (64)	5 11/16 (145)	5 1/4 (140)	7 (178)	4 x 5/8 4x(16)	8 1/2	5 7/8	5 1/8 (130)	4 3/8 (111)	4 9/16 (116)	7 15/16 (202)	26 7/16	19 (483)	9 1/2 (241)	186

### Technical Data

<b>Flow Range:</b>	44-285 U.S. GPM	<b>Temperature Range:</b>	5°-250°(-15°121°C)
<b>Minimum Pumping Rate:</b>	15 U.S. GPM	<b>Maximum Working Pressure:</b>	175 PSI
<b>Head Range:</b>	37-105 FEET	<b>Flanges:</b>	2 1/2" ANSI 125 LB. F.F.
<b>Motors:</b>	ODP (STANDARD); TEFC (OPTIONAL)		