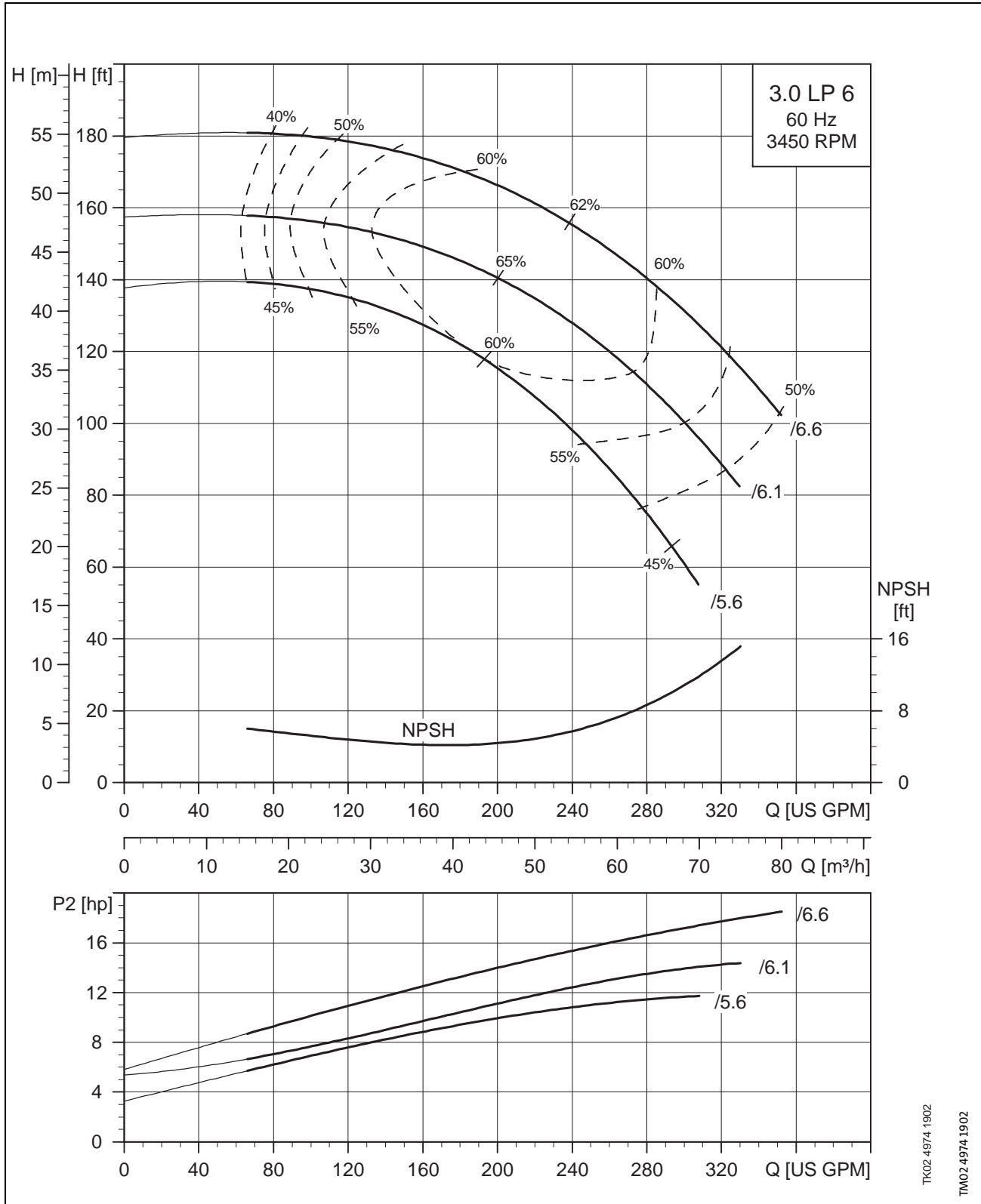


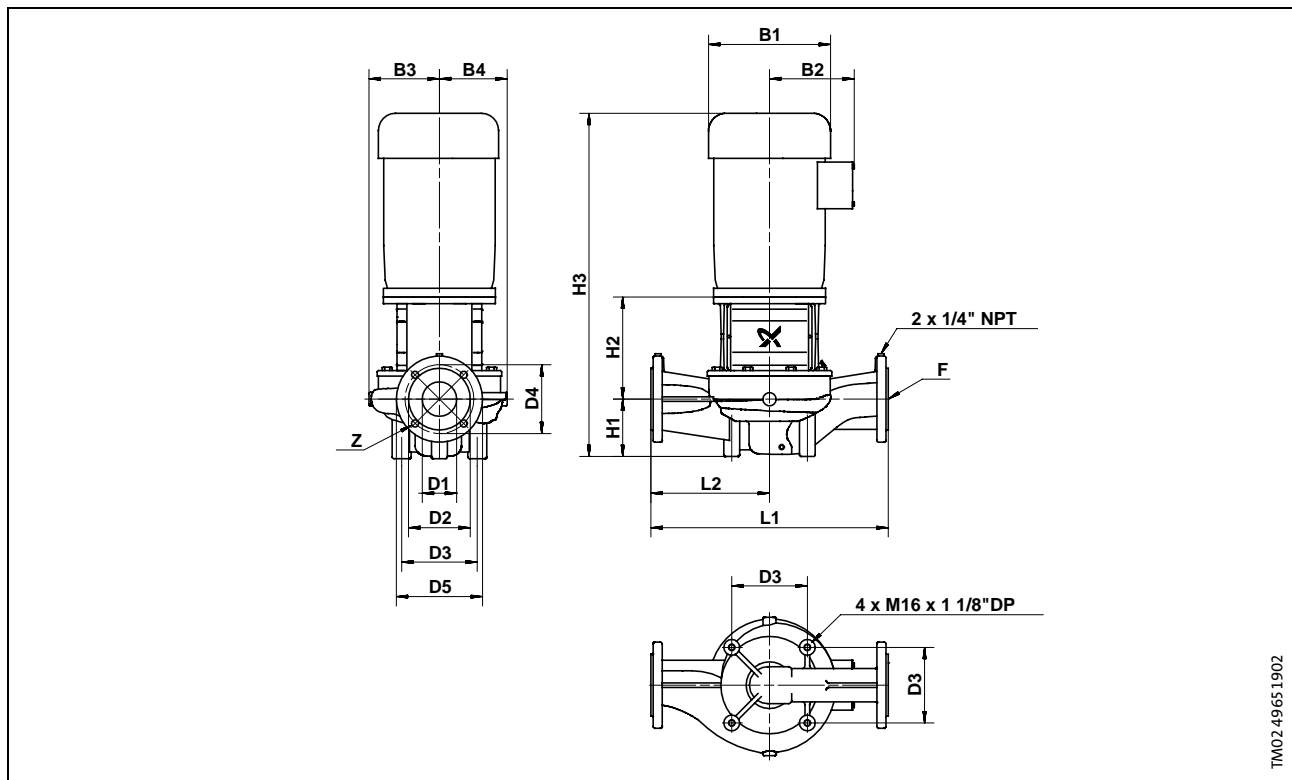
3.0 LP 6/XX



TK02 4974 1902

TM02 4974 1902

3.0 LP 6/XX



TM02.4965.1902

Electrical Data, Dimensions and Weights

Pump Type	HP	Mtr S.F.	PH	NEMA Frame Size	Volts	Dimensions [Inches] (mm)				Z [Qty.]	Dimensions [inches] (mm)								Net Wt.	
						D1	D3	D4	D5		B1	B2	B3	B4	H1	H2	H3	L1		L2
3.0 LP 6/5.6	15	1.15	3	254TC	208-230/ 460,575	3 (76)	6 5/8 (168)	6 (152)	7 1/2 (191)	4 x 5/8 4x(16)	10 3/16	7 3/8	6 3/16 (157)	5 15/16 (151)	5 1/8 (130)	8 7/16 (214)	29 1/8	21 (533)	10 1/2 (267)	210
3.0 LP 6/6.1	15	1.15	3	254TC	208-230/ 460,575	3 (76)	6 5/8 (168)	6 (152)	7 1/2 (191)	4 x 5/8 4x(16)	10 3/16	7 3/8	6 3/16 (157)	5 15/16 (151)	5 1/8 (130)	8 7/16 (214)	29 1/8	21 (533)	10 1/2 (267)	210
3.0 LP 6/6.6	20	1.15	3	284TSC	230/ 460,575	3 (76)	6 5/8 (168)	6 (152)	7 1/2 (191)	4 x 5/8 4x(16)	11 1/8	8 15/16	6 3/16 (157)	5 15/16 (151)	5 1/8 (130)	7 3/4 (197)	37	21 (533)	10 1/2 (267)	310

Technical Data

Flow Range:	66-330 U.S. GPM	Temperature Range:	5°-250°(-15°121°C)
Minimum Pumping Rate:	25 U.S. GPM	Maximum Working Pressure:	175 PSI
Head Range:	70-180 FEET	Flanges:	2 1/2" ANSI 125 LB. F.F.
Motors:	ODP (STANDARD); TEFC (OPTIONAL)		