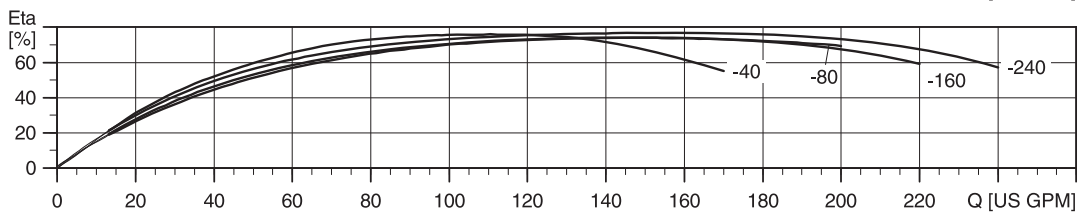
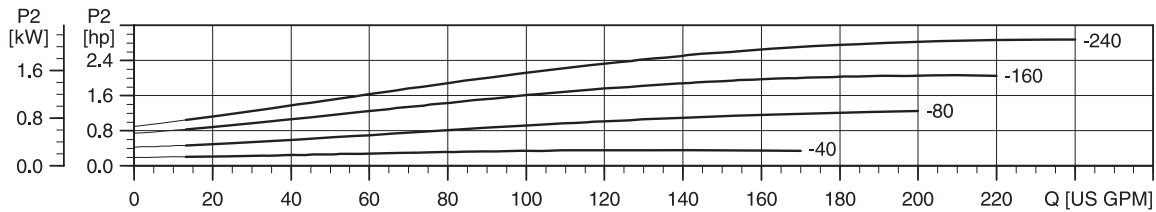
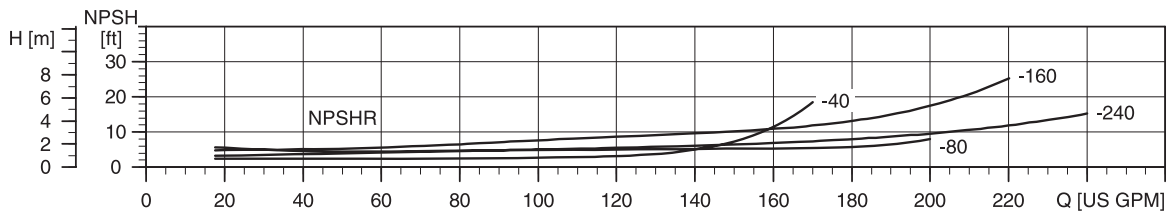
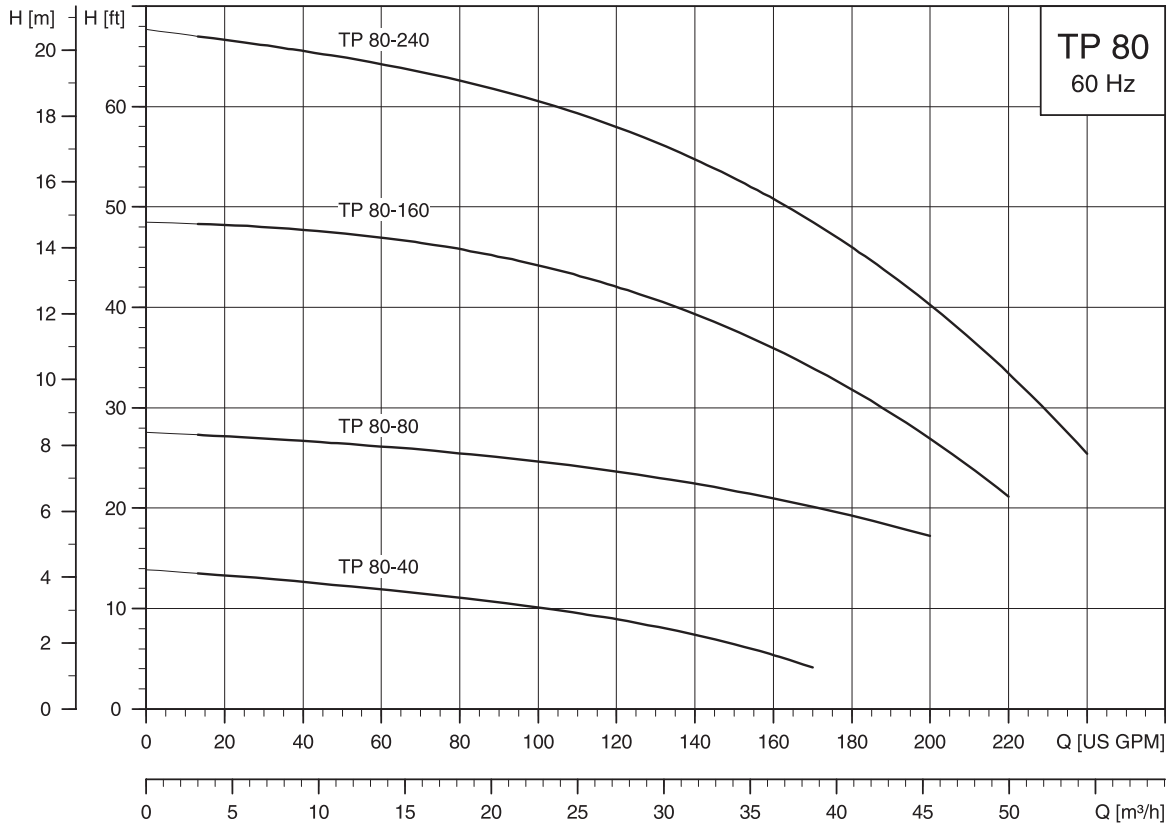
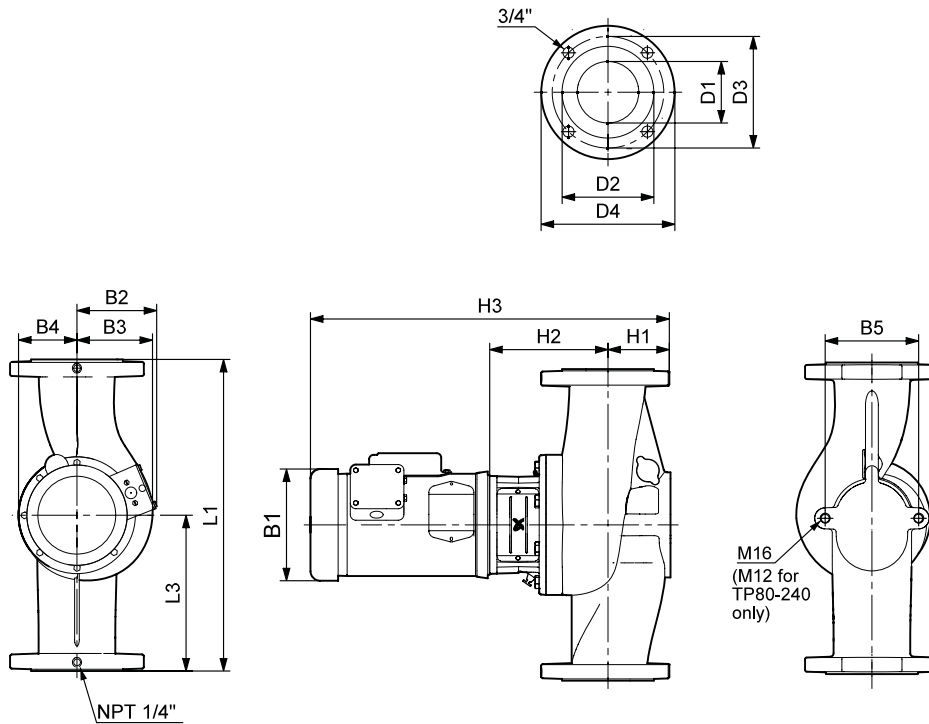


TP 80-XX



TK00 9228 1097



TMO 7769 4806

Dimensions and weights

Pump type	HP	Suc. disc. size	Ph	Dimensions [inches]													Net wt. [lbs]	
				(mm)														
				L1	L3	B1	B2	B3	B4	B5	H1	H2	H3	D1	D2	D3	D4	
TP80-40/4	1/2	1/3	1	19	9 1/2	6 1/4	4 7/16	5	4	6 5/16	3 13/16	6 3/8	19 15/16	3 3/16	5	6	7 9/16	107
			3	(483)	(241)	(159)	(113)	(127)	(102)	(160)	(97)	(162)	(506)	(81)	(127)	(152)	(192)	97
TP80-80/4	1 1/2	1/3	1	19	9 1/2	7 1/4	5 1/8	5	4	6 5/16	3 13/16	6 3/8	21 3/8	3 3/16	5	6	7 9/16	121
			3	(483)	(241)	(184)	(130)	(127)	(102)	(160)	(97)	(162)	(543)	(81)	(127)	(152)	(192)	108
TP80-160/2	3	1/3	1	19	9 1/2	8 1/2	5 7/8	4	4	6 5/16	3 13/16	6 7/8	24 3/8	3 3/16	5	6	7 9/16	152
			3	(483)	(241)	(216)	(149)	(102)	(102)	(160)	(97)	(175)	(619)	(81)	(127)	(152)	(192)	142
TP80-240/2	3	1/3	1	19	9 1/2	8 1/2	5 7/8	4	4	4 3/4	3 13/16	6 11/16	24 1/8	3 3/16	5	6	7 9/16	148.5
			3	(483)	(241)	(216)	(149)	(102)	(102)	(121)	(97)	(170)	(613)	(81)	(127)	(152)	(192)	138.5

Note: For information about motor data, see page 22.

Technical data

Flow range:	12-2400 U.S. GPM
Head range:	4-67.53 ft
Maximum working pressure:	145 PSI
Temperature range:	5°F (-15°C) to 284°F (140°C)
Max ambient air temperature:	104°F (40°C)
Motors:	TEFC-Standard, ODP-Optional
Flanges:	3" ANSI 125 lb., R.F.