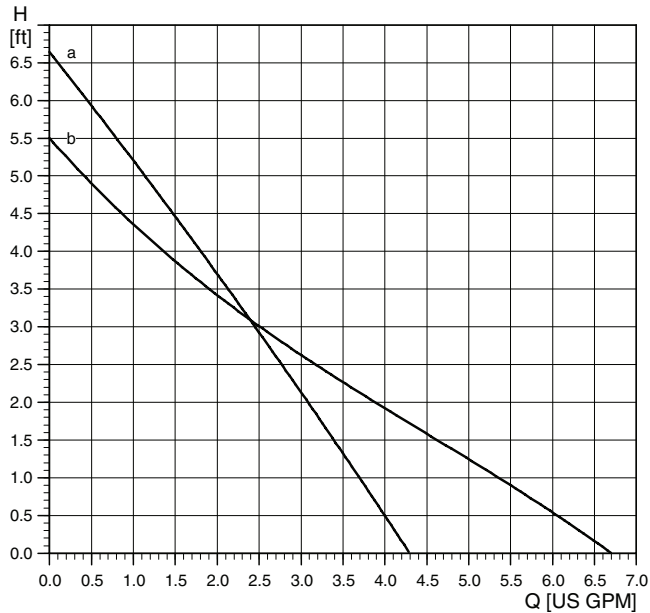


Technical data

UP Series
UP 15-10BUC5/7



Flow range: 0-6.6 U.S. gpm
 Head range: 0-6.6 feet
 Motors: 2-pole, single-phase
 Max. liquid temperature: 230 °F (110 °C)
 Min. liquid temperature: 36 °F (2 °C)
 Max. system pressure: 145 psi

Note: If the UP pump is equipped with a timer, the maximum liquid temperature is 150 °F (66 °C).

Model	Volts	Amps	Watts	Hp	Capacitor
UP 15-10BUC5/BUC7	115	0.22	25	1/25	2µF/400 V

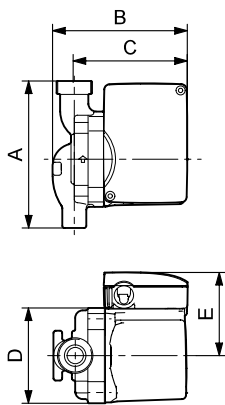
Position	System type	Description
a	Open	UP 15-10BUC5
b	Open	UP 15-10BUC7

TM03 8425 1507

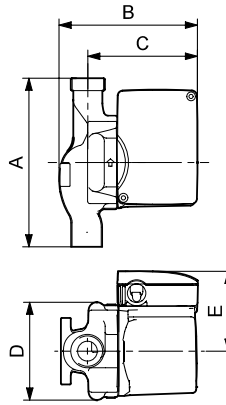
UP 15-10BUC5 and UP 15-10BUC5/LC UP 15-10BUC7 and UP 15-10BUC7/LC

UP 15-10BUC5/TLC

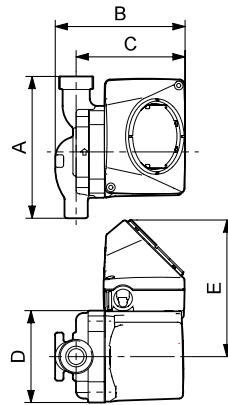
UP 15-10BUC7/TLC



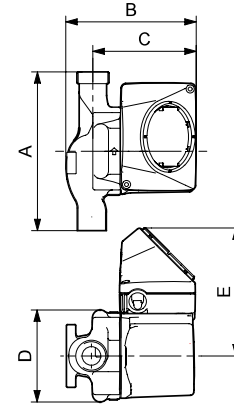
TM03 8549 2407



TM03 8553 2407



TM03 8550 2407



TM03 8554 2407

Model type	Product number	A	B	C	D	E	F	Connection type and size	Shipping weight [lbs]
UP 15-10BUC5	59896225	6 1/2	5 1/4	4	3 1/5	3 1/4	-	1/2" sweat	7.25 lbs
UP 15-10BUC5/LC	59896237	6 1/2	6 3/4	5 1/2	3 3/16	3 1/4	4	1/2" sweat	7.7
UP 15-10BUC5/TLC	59896238	6 1/2	6 3/4	5 1/2	3 3/16	3 1/4	4	1/2" sweat	7.7
UP 15-10BUC7	59896241	7 3/4	5 1/4	4	3 3/4	3 1/4	-	3/4" sweat	8.0 lbs
UP 15-10BUC7/LC	59896239	7 3/4	6 3/4	5 1/2	3 3/4	3 1/4	4	3/4" sweat	8.5
UP 15-10BUC7/TLC	59896240	7 3/4	6 3/4	5 1/2	3 3/4	3 1/4	4	3/4" sweat	8.5

Note: LC/TLC Models have 6-foot 3-prong power cord.